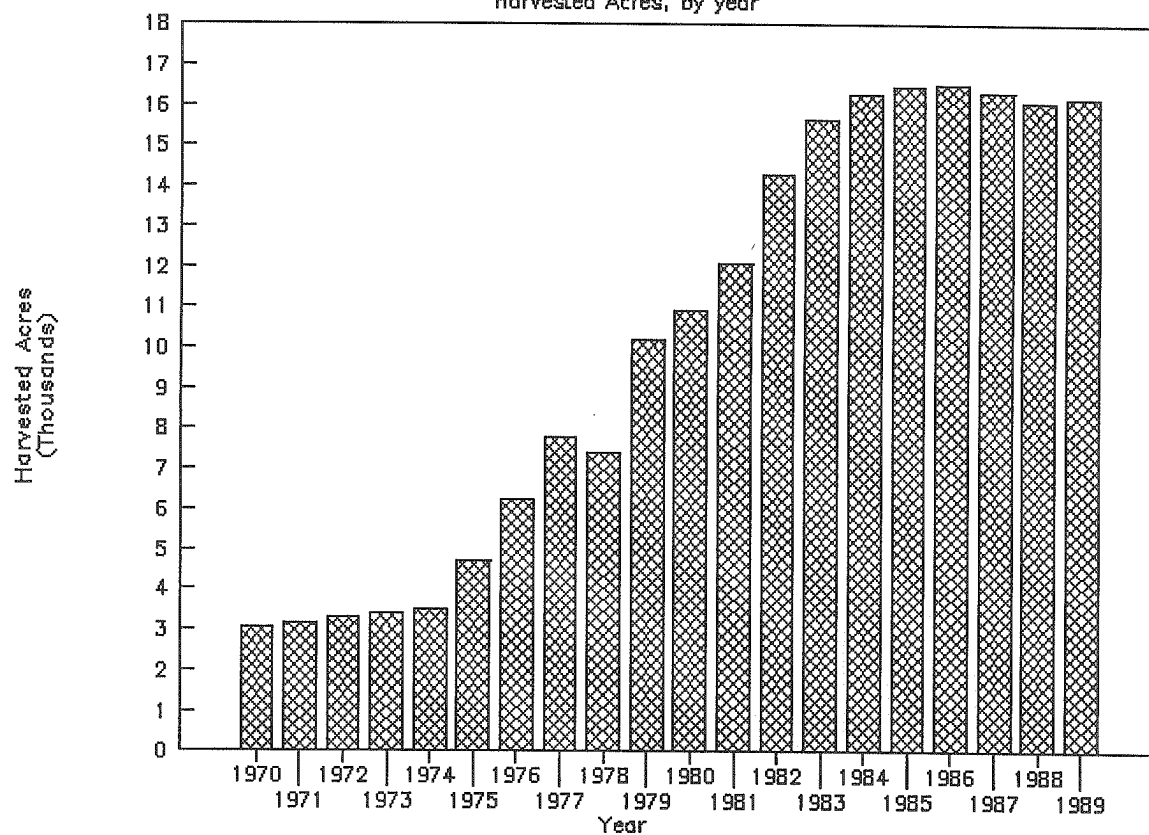


APPENDIX I

MAJOR FRUIT AND VEGETABLE CROPS, 1970-1989

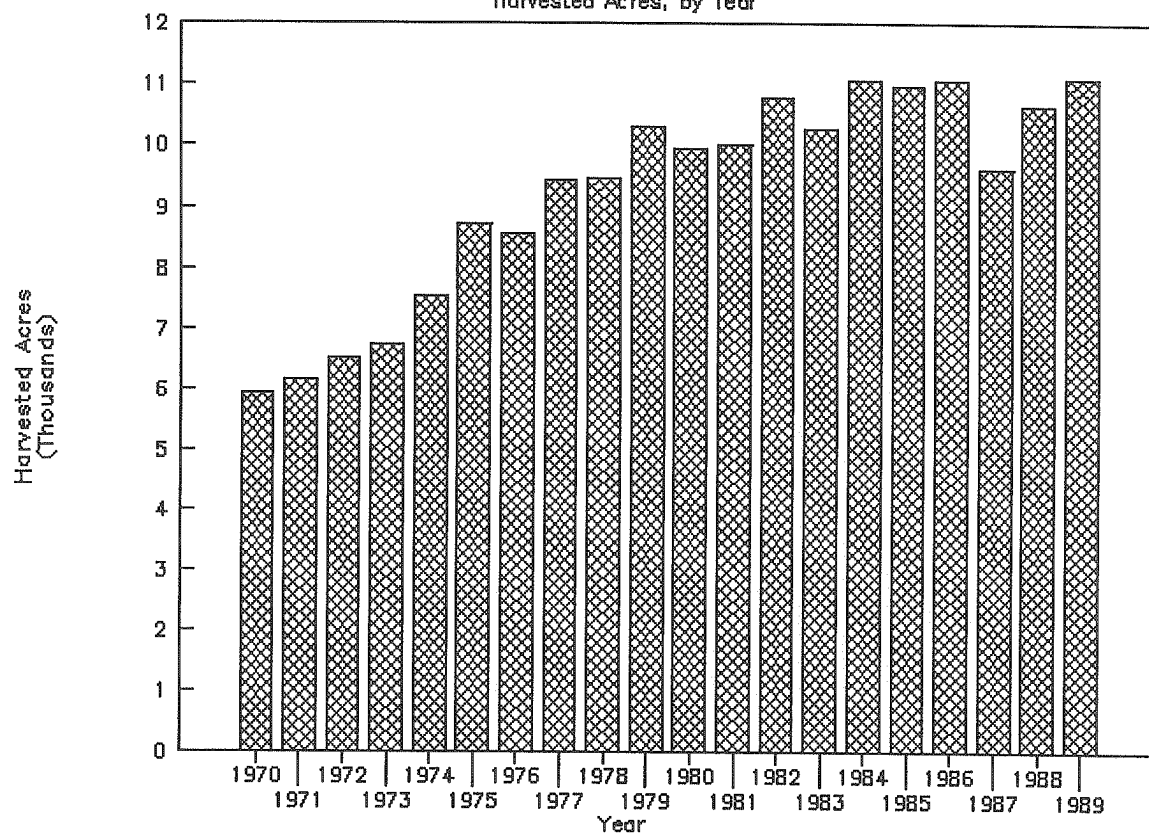
Avocados, Ventura County

Harvested Acres, by year



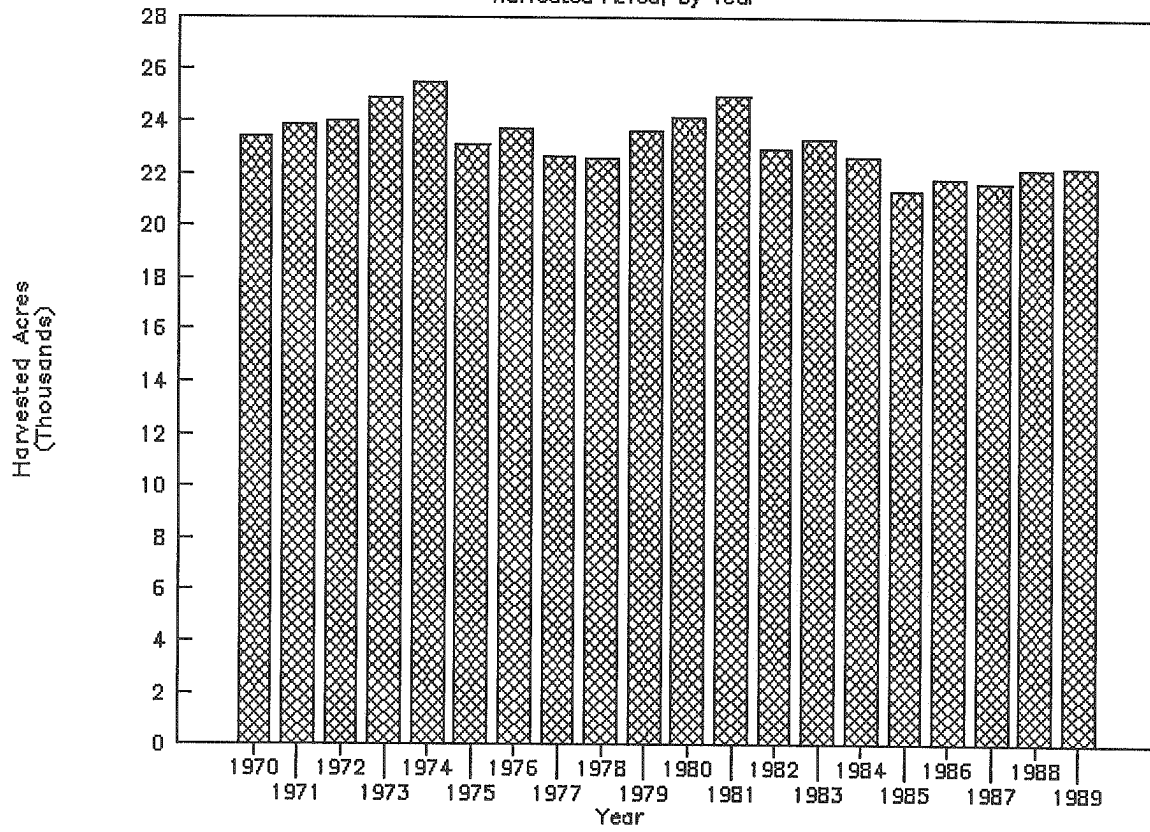
Celery, Ventura County

Harvested Acres, by Year



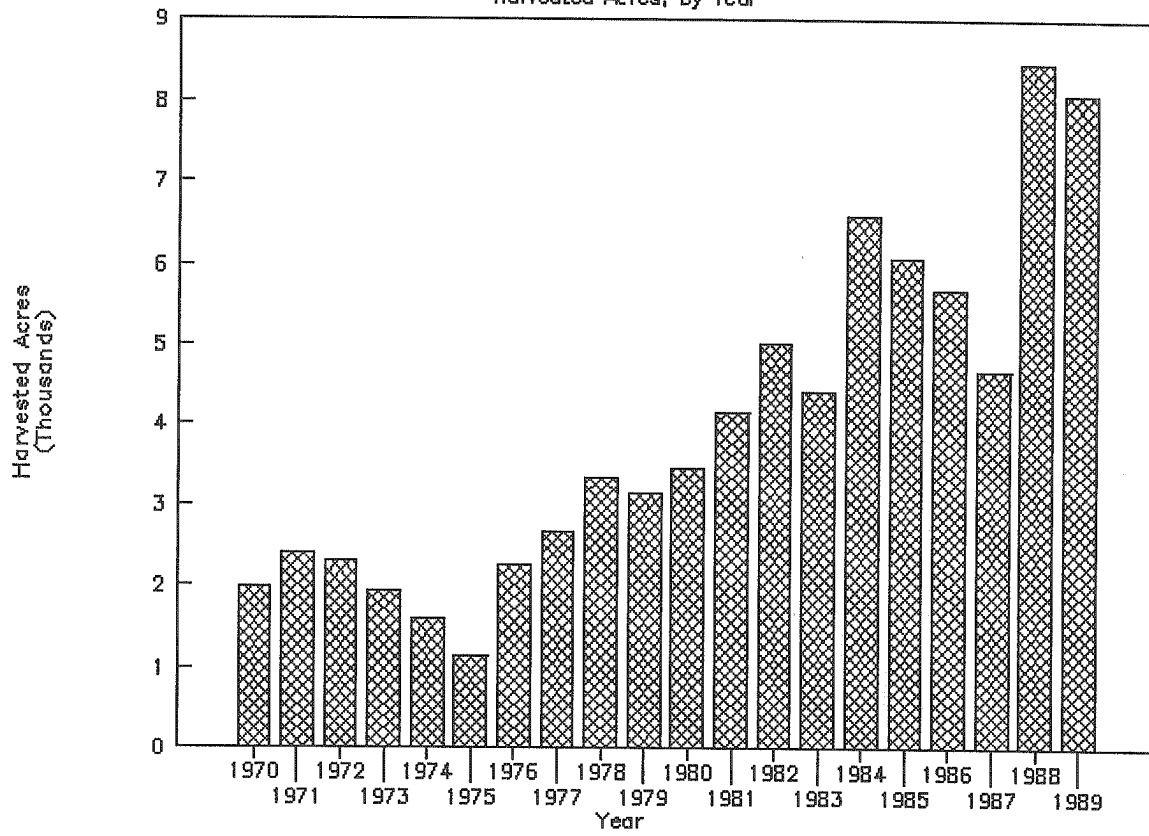
Lemons, Ventura County

Harvested Acres, by Year



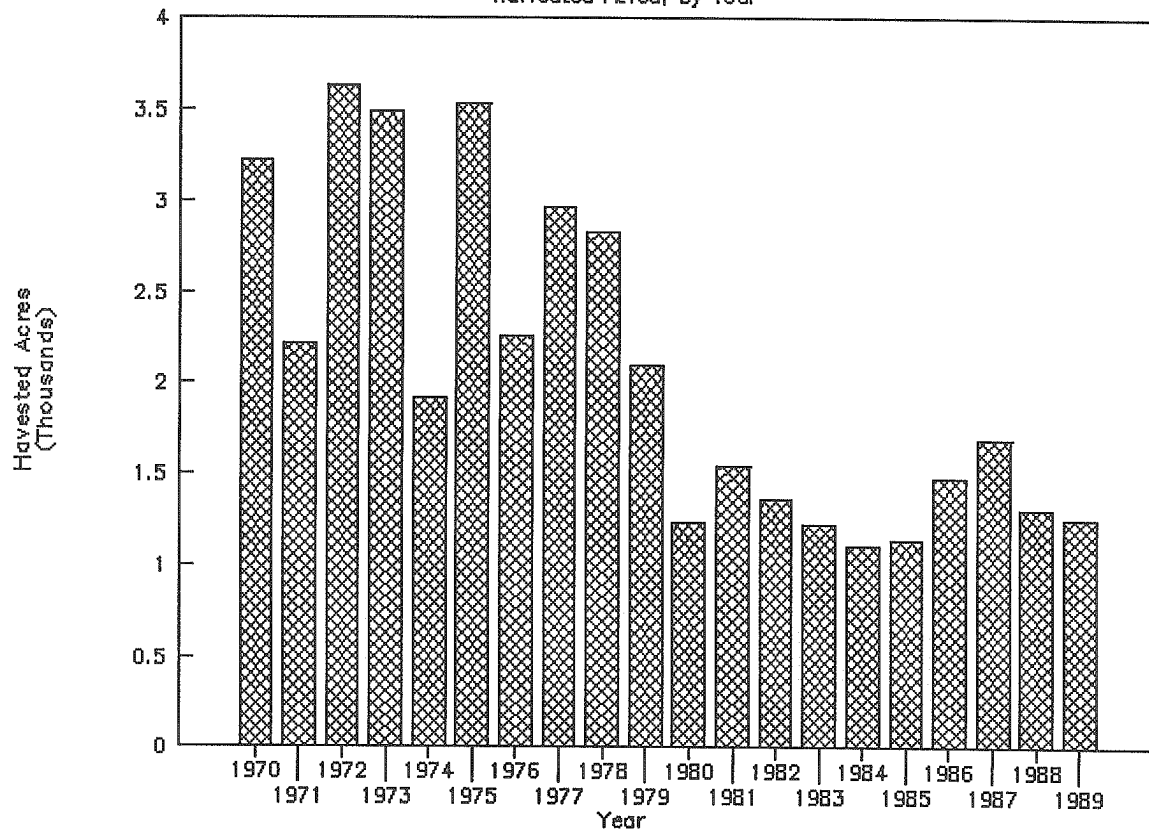
Other Lettuce, Ventura County

Harvested Acres, by Year



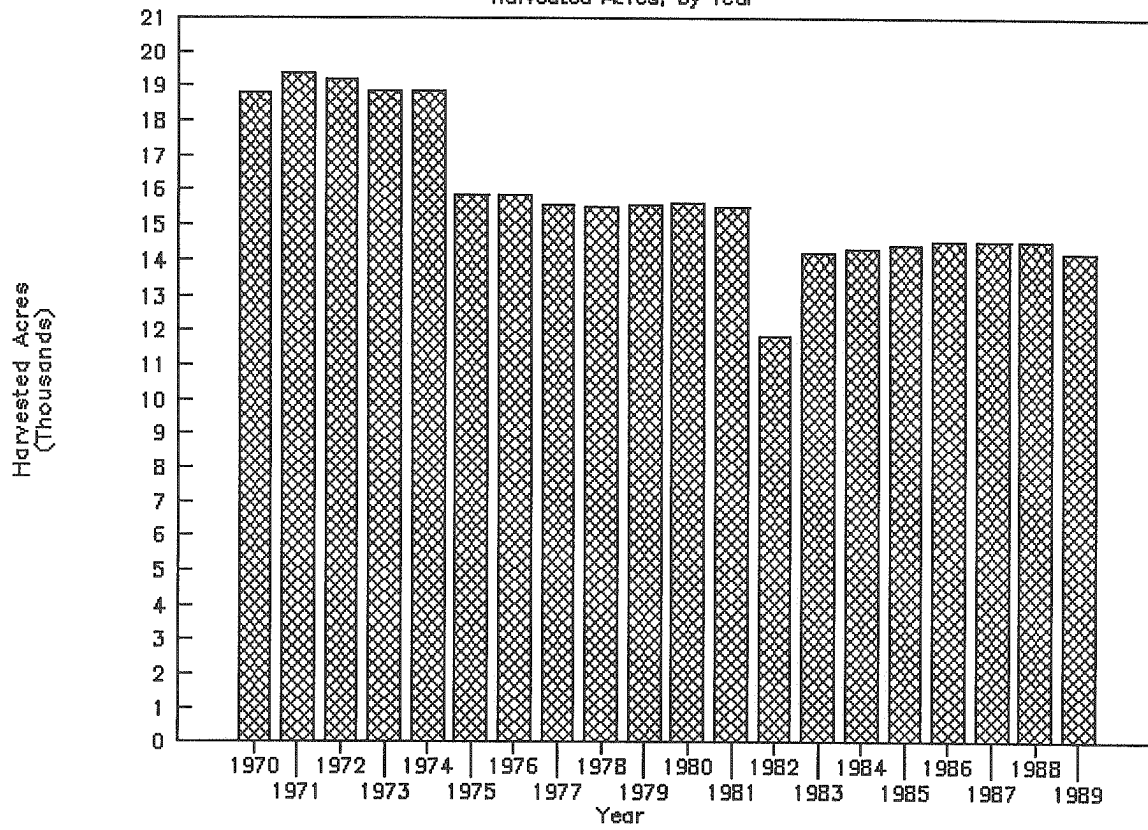
Head Lettuce, Ventura County

Harvested Acres, by Year



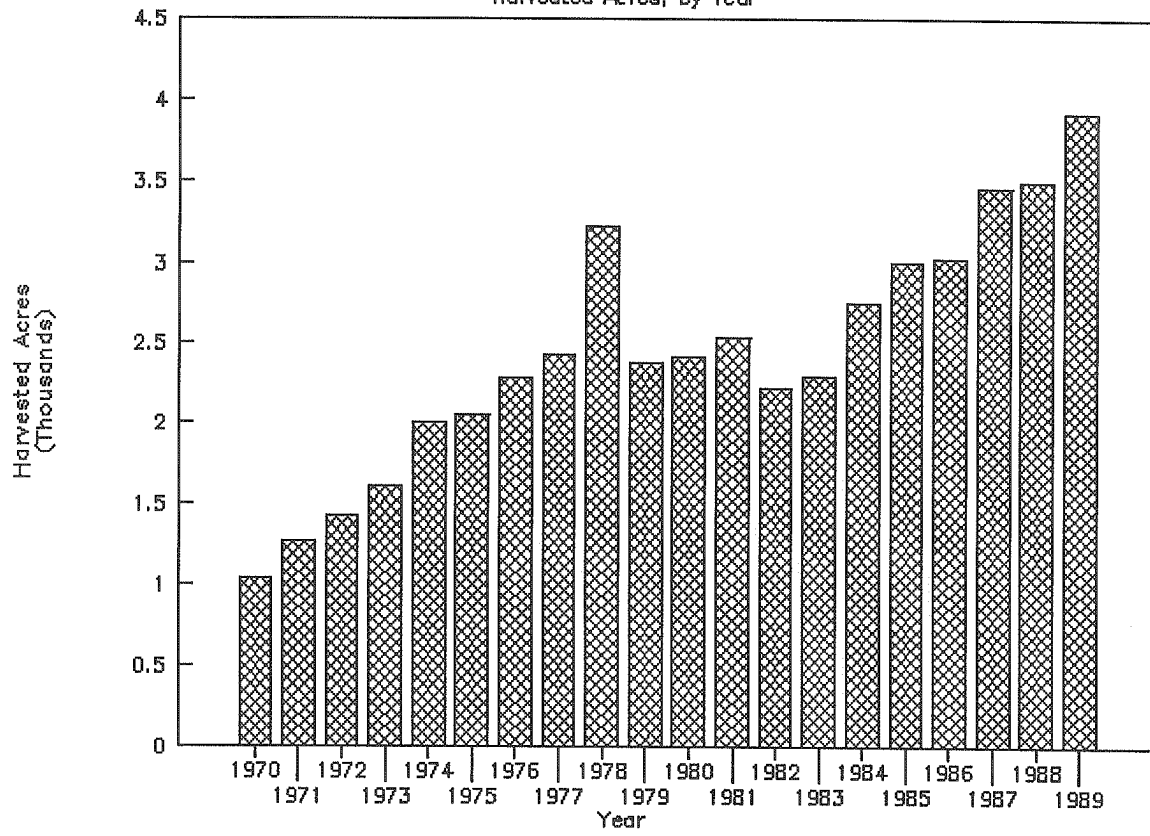
Valencia Oranges, Ventura County

Harvested Acres, by Year



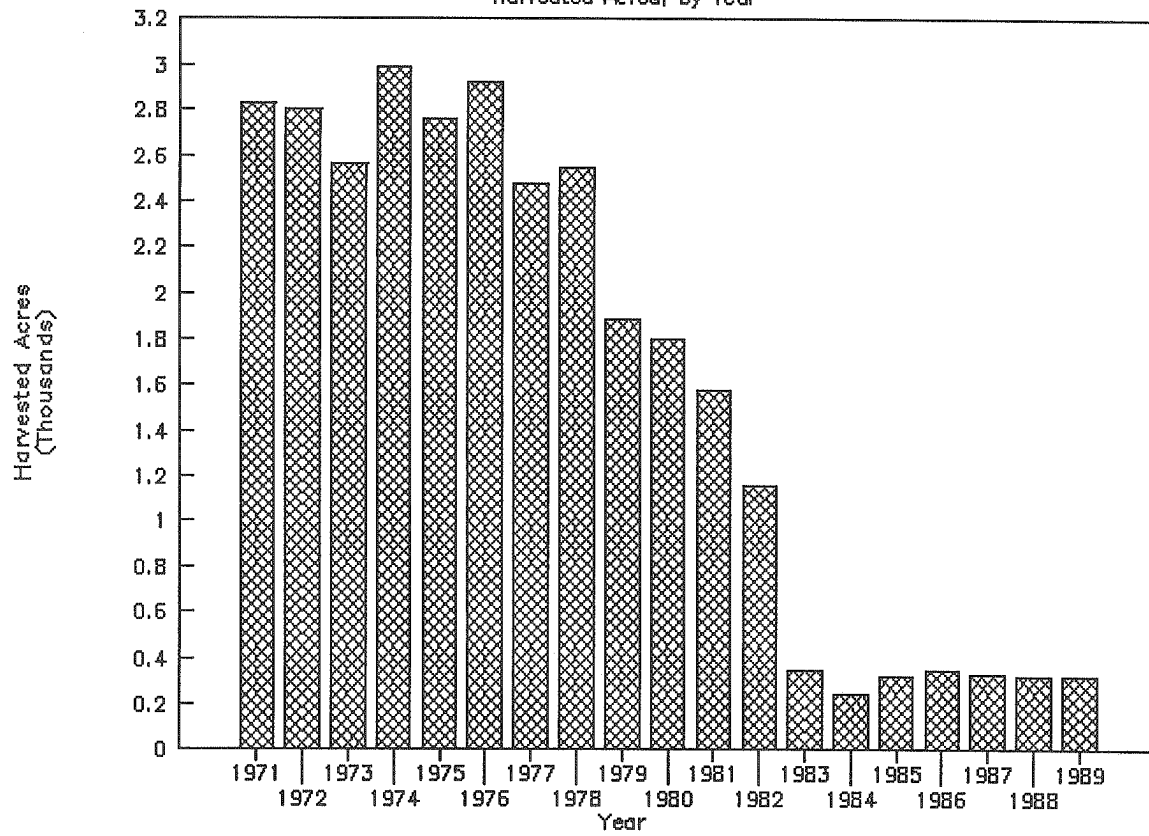
Strawberries, Ventura County

Harvested Acres, by Year



Fresh Tomatoes, Ventura County

Harvested Acres, by Year



APPENDIX II
SPECIAL DATA SETS, CALIFORNIA EDD

**VENTURA
COUNTY TABLES
CALENDAR YEAR 1987**

EDD, Labor Market Information Division, June 1990

TABLE 1 - AGRICULTURAL EMPLOYEES AND EARNINGS BY INDUSTRY
Ventura County - Calendar Year 1997

Standard Industrial Classification (SIC)	Industry Title	Employees in This SIC (1)	Earnings in This SIC & County (\$ Millions)	Total Earnings (2) of Employees With at Least One Job in This SIC and County (\$ Millions)		Earnings in This SIC & County as a Percent of Total Earnings	Employees Who Only Worked in this SIC and County	Employees Who Also Had	
				Outside This SIC	Outside This SIC			Farm Jobs (3)	Nonfarm Jobs (3)
0112	Rice	32	\$0.05	\$0.28	18%	-	100%	67%	
0119	Other Cash Grains	21	0.05	0.24	19%	50%	50%	50%	
011	Total Cash Grains	53	0.10	0.52	18%	20%	80%	50%	
0139	Other Field Crops	32	0.21	0.21	100%	100%	-	-	
0151	Vegetables & Melons	3,471	24.74	34.73	71%	48%	34%	29%	
0171	Berries	8,631	30.07	52.46	57%	41%	39%	33%	
0172	Grapes	467	0.55	2.40	23%	27%	41%	48%	
0174	Citrus Fruits	2,845	18.24	25.97	71%	50%	23%	30%	
0175	Deciduous Tree Fruits	32	0.01	0.18	6%	33%	25%	67%	
0179	Other Fruits & Nuts	414	1.59	3.21	50%	51%	25%	33%	
017	Total Fruits & Nuts	12,389	50.47	84.13	65%	43%	35%	33%	
0181	Flowers & Nursery Products	2,091	18.32	23.99	76%	51%	16%	29%	
0182	Food Crops Under Cover	446	3.08	5.72	54%	19%	-	81%	
0189	Other Hort Specialties	21	0.10	0.11	96%	50%	-	50%	
018	Total Hort Specialties	2,558	21.50	29.82	72%	54%	13%	38%	
019	General Crop Farms	732	4.87	9.48	51%	45%	30%	35%	
01	Ag Production-Crops	19,236	\$101.89	\$159.94	64%	46%	32%	33%	

TABLE 1 - AGRICULTURAL EMPLOYEES AND EARNINGS BY INDUSTRY
Ventura County -- Calendar Year 1987

(continued)

Standard Industrial Classification (SIC)	Industry Title	Employees in This SIC (1)	Earnings in This SIC & County (\$ Millions)	Total Earnings (2) of Employees With at Least One Job in This SIC and County (\$ Millions)	Earnings in This SIC & County as a Percent of Total Earnings		Employees Who Only Worked in this SIC and County		Employees Who Also Had Nonfarm Jobs (3)	
					Total Earnings	Percent of Total Earnings	Worked in this SIC and County	Outside This SIC	Worked in this SIC	Outside this SIC
0212	Other Beef Cattle	106	\$0.98	\$1.45	67%	50%	20%	40%		
0219	General Meat Livestock	11	0.04	0.04	100%	100%	-	-		
021	Total Meat Livestock	117	1.01	1.49	66%	55%	18%	36%		
024	Dairy	340	3.78	4.38	86%	44%	3%	53%		
0252	Eggs	860	6.90	8.88	78%	54%	23%	30%		
0272	Horses	11	0.07	0.12	62%	-	-	100%		
0279	Other Animal Specialties	96	0.73	0.73	100%	100%	-	-		
027	Total Animal Specialties	106	0.80	0.85	95%	90%	-	10%		
029	General Livestock Farms	11	0.02	0.05	46%	-	-	100%		
02	Ag Production-Livestock	1,433	\$12.52	\$15.65	80%	54%	16%	35%		

TABLE 1 - AGRICULTURAL EMPLOYEES AND EARNINGS BY INDUSTRY
Ventura County - Calendar Year 1987
(continued)

Standard Industrial Classification (SIC)	Industry Title	Employees in This SIC (1)	Earnings in This SIC & County (\$ Millions)	Total Earnings (2) of Employees With at Least One Job in This SIC and County (\$ Millions)	Earnings in This SIC & County as a Percent of Total Earnings	Employees Who Only Worked in this SIC and County	Employees Who Also Had		Employees Who Also Had	
							Farm Jobs (3)	Outside This SIC	Farm Jobs (3)	Outside This SIC
0711	Soil Preparation Services	32	30.25	30.31	32%	67%	-	-	33%	33%
0721	Crop Planting & Protection	531	4.74	5.63	84%	60%	24%	24%	24%	24%
0722	Crop Harvesting by Machine	1,476	4.08	10.01	41%	32%	59%	59%	28%	28%
0723	Crop Preparation for Market	478	4.70	7.44	63%	33%	22%	22%	51%	51%
0729	General Crop Services	11	0.07	0.07	100%	100%	-	-	-	-
072	Total Crop Services	2,495	13.58	23.15	59%	39%	44%	44%	31%	31%
0741	Livestock Veterinary Services	11	0.04	0.05	81%	-	-	-	100%	100%
0742	Pet Veterinary Services	467	4.89	5.69	86%	52%	-	-	41%	41%
074	Total Veterinary Services	478	4.93	5.73	86%	51%	-	-	42%	42%
0752	Other Pet Services	96	0.29	0.31	93%	76%	-	-	22%	22%
0761	Labor Contractors & Crew Leaders	11,210	28.34	63.79	44%	41%	36%	36%	33%	33%
0762	Farm Management Services	2,070	10.51	15.91	66%	37%	51%	51%	28%	28%
076	Total-FLC & Mgt Services	13,280	38.85	79.71	49%	41%	38%	38%	33%	33%
0781	Landscape Planning	244	1.78	2.84	63%	30%	9%	9%	65%	65%
0782	Lawn & Garden Services	2,558	3.56	16.54	52%	41%	15%	15%	49%	49%
0783	Ornamental Tree Services	180	0.73	1.29	57%	24%	-	-	76%	76%
078	Total Landscape & Hort Sers	2,983	11.06	20.67	54%	39%	15%	15%	52%	52%
07	Total Agricultural Services	19,363	68.96	129.87	53%	41%	34%	34%	35%	35%
01,071-2,076	Seasonal Ag Services	35,042	\$154.57	\$282.10	59%	43%	35%	35%	33%	33%

TABLE 1 - AGRICULTURAL EMPLOYEES AND EARNINGS BY INDUSTRY
Ventura County - Calendar Year 1987
(continued)

Standard Industrial Classification (SIC)	Industry Title	Employees in This SIC (1)	Earnings in This SIC & County (\$ Millions)	Total Earnings (2) of Employees With at Least One Job in This SIC and County (\$ Millions)	Earnings in This SIC & County as a Percent of Total Earnings	Employees Who Only Worked in this SIC and County		Employees Who Also Had Nonfarm Jobs (3)	
						Outside This SIC	Outside this SIC	Outside This SIC	Outside this SIC
01-02-07	California Agriculture	40,032	\$183.36	\$304.47	50%	44%			
08-09	Forestry & Fishing	32	0.06	0.27	24%	-	100%	33%	
10-14	Mining	106	0.89	2.02	44%	-	80%	70%	
15-17	Construction	1,603	6.21	17.15	36%	-	62%	75%	
20-29	Manufacturing 1	377	2.13	3.95	24%	-	74%	84%	
30-39	Manufacturing 2	754	3.82	9.22	41%	-	89%	72%	
40-49	Transportation	234	1.05	2.57	41%	5%	86%	84%	
50-59	Trade	2,505	7.48	21.61	35%	0%	66%	73%	
60-67	Fire	212	1.29	2.57	50%	-	75%	50%	
70-79	Services 1	1,720	4.99	16.10	31%	-	81%	80%	
80-89	Services 2	764	7.18	12.42	58%	3%	63%	68%	
90-99	Public Administration	85	0.98	1.42	69%	-	63%	75%	
	Non-Ag & All Other SICs	3,992	35.10	94.31	38%	0%	55%	72%	
	Total	49,923	\$219.46						

Source: This table is based on a 9.42 percent sample of the 1,161,928 employees reported at least once by an agricultural employer to California UI authorities in 1987.

(1) An employee may be counted in more than one Standard Industrial Classification (SIC) code.

(2) Total farm and non-farm earnings of employees with at least one job in the listed SIC. Farm includes SIC 01, 02, and 071, 072, 074, 075, and 076.

(3) These farm and nonfarm jobs could have been in more than one county or region.

(4) Most of these employees are reported by multi-establishment employers.

**TABLE 2 - AGRICULTURAL EMPLOYEES ASSIGNED TO THE
INDUSTRY OF THEIR MAXIMUM EARNINGS**
Ventura County -- Calendar Year 1987

Standard Industrial Classification (SIC)	Industry Title	Employees With Maximum Earnings (1) in This SIC & County	Earnings in This SIC & County (\$ Millions)	Percent of Total Employees and Earnings in This SIC & County (2)					
				Income Less than \$1000 Employees	Earnings	Income of \$1000-\$7499 Employees	Earnings	Income of \$7500 & Above Employees	Earnings
0112	Rice	11	\$0.03	-	-	100%	100%	-	-
0119	Other Cash Grains	11	0.03	-	-	100%	100%	-	-
011	Total Cash Grains	21	0.06	-	-	100%	100%	-	-
0139	Other Field Crops	32	0.21	33%	1%	33%	27%	33%	72%
0161	Vegetables & Melons	2,463	23.14	13%	1%	39%	17%	47%	32%
0171	Berries	5,966	27.30	17%	2%	70%	62%	12%	36%
0172	Grapes	234	0.37	32%	8%	68%	92%	-	-
0174	Citrus Fruits	2,038	16.74	21%	1%	38%	15%	41%	81%
0175	Deciduous Tree Fruits	11	0.01	100%	100%	-	-	-	-
0179	Other Fruits & Nuts	287	1.40	26%	2%	56%	41%	19%	57%
017	Total Fruits & Nuts	3,535	45.81	19%	1%	62%	46%	19%	53%
0181	Flowers & Nursery Products	1,699	17.20	12%	0%	36%	13%	53%	36%
0182	Food Crops Under Cover	340	2.76	6%	0%	47%	30%	47%	59%
0189	Other Hort Specialties	21	0.10	-	-	100%	100%	-	-
018	Total Hort Specialties	2,059	20.06	11%	0%	38%	15%	51%	24%
0191	General Crop Farms	435	3.76	10%	1%	46%	23%	44%	76%
01	Ag Production-Crops	13,546	\$93.04	16%	1%	54%	31%	30%	53%

**TABLE 2 - AGRICULTURAL EMPLOYEES ASSIGNED TO THE
INDUSTRY OF THEIR MAXIMUM EARNINGS**
Ventura County -- Calendar Year 1987
(continued)

Standard Industrial Classification (SIC)	Industry Title	Employees With Maximum Earnings (1) in This SIC & County	Earnings in This SIC & County (\$ Millions)	Percent of Total Employees and Earnings in This SIC & County (2)					
				Income Less than \$1000 Employees	Earnings	Income of \$1000-\$7499 Employees	Earnings	Income of \$7500 & Above Employees	Earnings
0212	Other Beef Cattle	74	\$0.87	-	-	43%	12%	57%	88%
0219	General Meat Livestock	11	0.04	-	-	100%	100%	-	-
021	Total Meat Livestock	85	0.91	-	-	50%	16%	50%	88%
0241	Dairy	255	3.66	8%	0%	25%	6%	67%	94%
0252	Eggs	637	6.48	8%	0%	53%	19%	38%	80%
0272	Horses	11	0.07	-	-	100%	100%	-	-
0279	Other Animal Specialties	96	0.73	11%	0%	33%	13%	56%	36%
027	Total Animal Specialties	105	0.80	10%	0%	40%	21%	50%	79%
02	Ag Production-Livestock	1,083	\$11.86	8%	0%	45%	15%	47%	55%

**TABLE 2 - AGRICULTURAL EMPLOYEES ASSIGNED TO THE
INDUSTRY OF THEIR MAXIMUM EARNINGS**
Ventura County - Calendar Year 1987
(continued)

Standard Industrial Classification (SIC)	Industry Title	Employees With Maximum Earnings (1) in This SIC & County (\$ Millions)	Earnings in This SIC & County (\$ Millions)	Percent of Total Employees and Earnings in This SIC & County (2)		Income of \$1000-\$7499 Employees	Earnings	Income of \$7500 & Above Employees	Earnings
				Income Less than \$1000 Employees	Earnings				
0711	Soil Preparation Services	32	\$0.25	-	0%	57%	14%	33%	86%
0721	Crop Planting & Protection	446	4.49	14%	0%	40%	18%	45%	81%
0722	Crop Harvesting by Machine	743	3.42	21%	2%	63%	55%	16%	44%
0723	Crop Preparation for Market	308	3.94	3%	0%	31%	9%	66%	90%
0729	General Crop Services	11	0.07	-	-	100%	100%	-	-
072	Total Crop Services	1,507	11.92	15%	1%	50%	25%	35%	73%
0741	Livestock Veterinary Services	11	0.04	-	-	100%	100%	-	-
0742	Pet Veterinary Services	414	4.62	13%	1%	51%	14%	36%	85%
074	Total Veterinary Services	425	4.66	13%	1%	53%	15%	35%	85%
0752	Other Pet Services	96	0.29	33%	8%	56%	59%	11%	34%
0761	Labor Contractors & Crew Leaders	6,985	24.48	32%	3%	56%	55%	13%	42%
0762	Farm Management Services	1,359	9.75	9%	0%	57%	31%	33%	69%
076	Total FLC & Mgt Services	8,355	34.23	28%	2%	56%	48%	16%	50%
0781	Landscape Planning	127	1.59	17%	0%	33%	12%	50%	88%
0782	Lawn & Garden Services	1,507	7.17	25%	2%	56%	43%	19%	55%
0783	Ornamental Tree Services	85	0.63	50%	2%	13%	3%	38%	95%
078	Total Landscape & Hort Sars	1,720	9.40	26%	2%	52%	35%	22%	63%
07	Total Agricultural Services	12,134	60.73	26%	2%	55%	39%	20%	59%
91,071-2,075	Seasonal Ag Services	23,439	\$139.43	20%	1%	54%	35%	25%	64%

**TABLE 2 - AGRICULTURAL EMPLOYEES ASSIGNED TO THE
INDUSTRY OF THEIR MAXIMUM EARNINGS**
Ventura County - Calendar Year 1987

(continued)

Standard Industrial Classification (SIC)	Industry Title	Employees With Maximum Earnings (1) in This SIC & County	Earnings in This SIC & County (\$ Millions)	Percent of Total Employees and Earnings in This SIC & County (2)					
				Income Less than \$1000 Employees	Earnings	Income of \$1000-\$7499 Employees	Earnings	Income of \$7500 & Above Employees	Earnings
01,02,07	California Agriculture	26,762	\$165.63	20%	1%	54%	33%	26%	66%
08-09	Forestry & Fishing	11	0.05	-	-	100%	100%	-	-
10-14	Mining	32	0.72	-	-	-	-	100%	100%
15-17	Construction	510	4.79	13%	1%	40%	17%	48%	82%
20-29	Manufacturing 1	234	1.29	14%	1%	55%	28%	32%	71%
30-39	Manufacturing 2	340	3.19	3%	0%	53%	25%	44%	75%
40-49	Transportation	106	0.85	-	-	60%	23%	40%	77%
50-59	Trade	828	5.69	19%	1%	51%	26%	29%	72%
60-67	Fire	96	1.17	-	-	33%	19%	67%	81%
70-79	Services 1	488	3.57	11%	1%	65%	36%	24%	61%
80-89	Services 2	340	6.62	3%	0%	44%	9%	53%	91%
90-99	Public Administration	32	0.95	-	-	33%	2%	67%	98%
	Non-Ag & All Other SICs	3,015	28.89	11%	1%	50%	21%	39%	73%
	Total	29,777	\$194.51						

Source: This table is based on a 9.42 percent sample of the 1,161,923 employees reported at least once by an agricultural employer to California UI authorities in 1987.

(1) Maximum earnings were determined by comparing total wages from jobs in each Standard Industrial Classification (SIC) & county combination.

For each county, a worker is included only in the SIC & county of their highest wages.

(2) Percent totals may not equal 100% because of rounding.

TABLE 3A - SEASONAL AGRICULTURAL EMPLOYEES AND EARNINGS BY INDUSTRY
Ventura County - Calendar Year 1987

Standard Industrial Classification (SIC)	Industry Title	Seasonal (1) Employees in This SIC & County	Earnings in This SIC & County (\$ Millions)	Earnings in This SIC as a Percent of Total Earnings (2)	Farm (3) Earnings Outside This SIC as a Percent of Total Earnings (2)	Nonfarm (3) and Multi-establishment Earnings as a Percent of Total Earnings (2)
0112	Rice	11	\$0.03	36%	24%	38%
0119	Other Cash Grains	11	0.03	100%	-	-
011	Total Cash Grains	21	0.06	52%	19%	29%
0161	Vegetables & Melons	1,157	3.13	52%	19%	29%
0171	Berries	4,798	15.29	63%	14%	22%
0172	Grapes	308	0.50	28%	15%	57%
0174	Citrus Fruits	796	2.10	43%	10%	46%
0179	Other Fruits & Nuts	138	0.30	22%	3%	75%
017	Total Fruits & Nuts	6,040	18.19	56%	13%	30%
0181	Flowers & Nursery Products	669	2.05	50%	5%	45%
0182	Food Crops Under Cover	234	1.14	48%	-	54%
0189	Other Hort Specialties	21	0.10	96%	-	4%
018	Total Hort Specialties	924	3.29	49%	3%	47%
0191	General Crop Farms	244	0.73	45%	12%	43%
01	Ag Production-Crops	8,386	\$25.41	54%	13%	33%

TABLE 2A - SEASONAL AGRICULTURAL EMPLOYEES AND EARNINGS BY INDUSTRY
Ventura County - Calendar Year 1987

(continued)

Standard Industrial Classification (SIC)	Industry Title	Seasonal (1) Employees in This SIC & County	Earnings in This SIC & County (\$ Millions)	Earnings in This SIC as a Percent of Total Earnings (2)	Farm (3) Earnings Outside This SIC as a Percent of Total Earnings (2)		Nonfarm (3) and Multi-establishment Earnings as a Percent of Total Earnings (2)
					Farm (3) Earnings Outside This SIC as a Percent of Total Earnings (2)	Nonfarm (3) and Multi-establishment Earnings as a Percent of Total Earnings (2)	
0212	Other Beef Cattle	32	\$0.11	25%	6%	69%	
0219	General Meat Livestock	11	0.04	100%	-	-	
021	Total Meat Livestock	42	0.14	31%	5%	64%	
0241	Dairy	85	0.19	33%	-	62%	
0252	Eggs	403	1.19	51%	7%	42%	
0279	Other Animal Specialties	32	0.10	100%	-	-	
02	Ag Production-Livestock	563	\$1.62	48%	6%	46%	

TABLE 3A - SEASONAL AGRICULTURAL EMPLOYEES AND EARNINGS BY INDUSTRY
Ventura County - Calendar Year 1987
(continued)

Standard Industrial Classification (SIC)	Industry Title	Seasonal (1) Employees in This SIC & County	Earnings in This SIC & County (\$ Millions)	Earnings in This SIC as a Percent of Total Earnings (2)	Farm (3) Earnings Outside This SIC as a Percent of Total Earnings (2)	Nonfarm (3) and Multi-establishment Earnings as a Percent of Total Earnings (2)
0711	Soil Preparation Services	21	\$0.04	100%	.	.
0721	Crop Planting & Protection	212	0.80	65%	3%	32%
0722	Crop Harvesting by Machine	616	1.06	51%	29%	20%
0723	Crop Preparation for Market	106	0.39	54%	18%	28%
0729	General Crop Services	11	0.07	100%		
072	Total Crop Services	945	2.51	56%	20%	24%
0741	Livestock Veterinary Services	11	0.04	81%	.	19%
0751	Labor Contractors & Crew Leaders	4,703	10.43	49%	16%	33%
0752	Farm Management Services	1,136	2.96	53%	27%	20%
075	Total-FLC & Mgt Services	5,839	13.39	50%	20%	30%
0781	Landscape Planning	11	0.03	47%	53%	.
0782	Lawn & Garden Services	202	0.36	32%	47%	21%
078	Total Landscape & Hort Sers	212	0.39	33%	47%	20%
07	Total Agricultural Services	7,023	16.47	50%	21%	25%
01,071-2,076	Seasonal Ag Services	15,191	\$41.45	53%	16%	32%

TABLE 3A - SEASONAL AGRICULTURAL EMPLOYEES AND EARNINGS BY INDUSTRY
Ventura County - Calendar Year 1987

(continued)

State of California
 Employment Development Department

Standard Industrial Classification (SIC)	Industry Title	Seasonal (1) Employees in This SIC & County	Earnings in This SIC & County (\$ Millions)	Earnings in This SIC as a Percent of Total Earnings (2)	Farm (3) Earnings Outside This SIC as a Percent of Total Earnings (2)	Nonfarm (3) and Multi-establishment Earnings as a Percent of Total Earnings (2)
01,02,07	California Agriculture	15,977	\$43.50	52%		
08-09	Forestry & Fishing	21	0.05	59%	41%	-
10-14	Mining	21	0.13	53%	44%	3%
15-17	Construction	350	1.32	44%	37%	20%
20-29	Manufacturing 1	340	0.60	18%	35%	47%
30-39	Manufacturing 2	223	1.45	34%	31%	15%
40-49	Transportation	64	0.22	29%	40%	32%
50-59	Trade	558	1.14	30%	47%	23%
60-67	Fire	74	0.50	54%	36%	10%
70-79	Services 1	308	0.90	33%	32%	35%
80-89	Services 2	106	0.90	58%	24%	18%
90-99	Public Administration	42	0.50	31%	10%	9%
	Non-Ag & All Other SICs	2,298	7.71	39%	35%	25%
	Total	18,185	\$51.21			

Source: This table is based on a 9.42 percent sample of the 1,151,928 employees reported at least once by an agricultural employer to California UI authorities in 1987.

(1) Seasonal employees were those reported by one or more farm reporting units to have done 5 to 50 weeks of work and earned \$1000 to \$7500. Jobs from all SICs & FIPs are used to classify a worker.

(2) Percent totals may not equal 100% because of rounding.

(3) These farm and nonfarm jobs could have been in this or in another county or region; counts only work done outside of this SIC.

Farm means Standard Industrial Classification (SIC) 01, 02, and 071, 072, 0741, 0751, and 076. Nonfarm includes SIC 0742, 0752, 078, 08-99, and multieestablishment reporting units which have no SIC.

Aggregate SICs were tallied by summing individual SICs, causing double-counting of employees that worked in multiple SICs within an aggregate SIC.

TABLE 38 - MIGRANT AGRICULTURAL EMPLOYEES AND EARNINGS BY INDUSTRY
Ventura County - Calendar Year 1987

Standard Industrial Classification (SIC)	Industry Title	Migrant (1) Employees in This SIC & County	Earnings in This SIC & County (\$ Millions)	Earnings in This SIC as a Percent of Total Earnings (2)	Farm (3) Earnings Outside This SIC as a Percent of Total Earnings (2)	Nonfarm (3) and Multi-establishment Earnings as a Percent of Total Earnings (2)
0112	Rice	11	\$0.03	38%	24%	38%
0151	Vegetables & Melons	190	0.37	44%	39%	17%
0171	Berries	860	1.45	32%	33%	35%
0172	Grapes	159	0.18	20%	34%	43%
0174	Citrus Fruits	138	0.15	31%	55%	14%
0179	Other Fruits & Nuts	32	0.04	7%	4%	89%
017	Total Fruits & Nuts	1,189	1.82	29%	32%	30%
0181	Flowers & Nursery Products	83	0.11	22%	12%	68%
01	Ag Production-Crops	1,433	2.33	30%	32%	36%
0252	Eggs	32	0.05	68%	24%	8%
02	Ag Production-Livestock	32	0.05	58%	24%	8%
0721	Crop Planting & Protection	21	0.05	29%	6%	65%
0722	Crop Harvesting by Machine	64	0.10	58%	33%	9%
0723	Crop Preparation for Market	11	0.01	11%	89%	-
072	Total Crop Services	96	0.15	40%	28%	32%
0761	Labor Contractors & Crew Leaders	998	1.34	31%	33%	36%
0762	Farm Management Services	202	0.31	34%	64%	3%
076	Total FLC & Mgt Services	1,200	1.65	32%	39%	38%
0782	Lawn & Garden Services	42	0.01	4%	53%	43%
07	Total Agricultural Services	1,338	1.82	31%	38%	30%
01,071-2,076	Seasonal Ag Services	2,728	34.14	31%	34%	35%

TABLE 38 - MIGRANT AGRICULTURAL EMPLOYEES AND EARNINGS BY INDUSTRY
Ventura County - Calendar Year 1987
(continued)

Standard Industrial Classification (SIC)	Industry Title	Migrant (1) Employees in This SIC & County	Earnings in This SIC & County (\$ Millions)	Earnings in This SIC as a Percent of Total Earnings (2)	Farm (3) Earnings Outside This SIC as a Percent of Total Earnings (2)	Nonfarm (3) and Multi-establishment Earnings as a Percent of Total Earnings (2)
01,02,07	California Agriculture	2,903	\$4.20	31%		
15 - 17	Construction	64	0.17	35%	41%	24%
20 - 29	Manufacturing 1	54	0.22	16%	13%	71%
30 - 39	Manufacturing 2	11	0.01	43%	35%	22%
40 - 49	Transportation	11	0.03	41%	52%	7%
50 - 59	Trade	117	0.10	22%	49%	29%
60 - 67	Fire	11	0.01	17%	83%	-
70 - 79	Services 1	42	0.13	43%	22%	34%
80 - 89	Services 2	11	0.00	0%	44%	55%
	Non-Ag & All Other SICs	329	0.57	23%	23%	48%
	Total	3,132	\$4.87			

Source: This table is based on a 9.42 percent sample of the 1,151,928 employees reported at least once by an agricultural employer to California UI authorities in 1987.

(1) Migrant employees were those reported by at least 2 farm reporting units in at least 2 counties, performed 5 to 30 weeks of farm work, and earned \$1000 to \$7500 from farm reporting units. Jobs from all SICs & FIPs are used to classify a worker.

(2) Percent totals may not equal 100% because of rounding.

(3) These farm and nonfarm jobs could have been in this or in another county or region; counts only work done outside of this SIC.

Farm means Standard Industrial Classification (SIC) 01, 02, and 071, 072, 0741, 0751, and 076. Nonfarm includes SIC 0742, 0752, 075, 08-99, and multiestablishment reporting units which have no SIC. Aggregate SICs were tallied by summing individual SICs, causing double-counting of employees that worked in multiple SICs within an aggregate SIC.

TABLE 3C - MIXED AGRICULTURAL EMPLOYEES AND EARNINGS BY INDUSTRY
Ventura County - Calendar Year 1987

Standard Industrial Classification (SIC)	Industry Title	Mixed (1) Employees in This SIC & County	Earnings in This SIC & County (\$ Millions)	Earnings in This SIC as a Percent of Total Earnings (2)	Farm (3) Earnings Outside This SIC as a Percent of Total Earnings (2)	Nonfarm (3) and Multi-establishment Earnings as a Percent of Total Earnings (2)
0112	Rice	21	\$0.05	24%	58%	19%
0119	Other Cash Grains	11	0.02	9%	73%	19%
011	Total Cash Grains	32	0.07	15%	55%	19%
0161	Vegetables & Melons	1,088	4.24	37%	9%	55%
0171	Berries	2,824	7.00	30%	11%	59%
0172	Grapes	223	0.31	15%	4%	79%
0174	Citrus Fruits	880	3.89	40%	6%	54%
0175	Deciduous Tree Fruits	21	0.01	3%	-	97%
0179	Other Fruits & Nuts	138	0.18	10%	12%	78%
017	Total Fruits & Nuts	4,066	11.37	31%	9%	60%
0181	Flowers & Nursery Products	605	3.92	46%	3%	52%
0182	Food Crops Under Cover	361	2.75	51%	-	49%
0189	Other Hort Specialties	11	0.03	87%	-	13%
018	Total Hort Specialties	977	6.71	46%	2%	50%
0191	General Crop Farms	255	1.36	27%	6%	55%
01	Ag Production-Crops	9,338	23.75	35%	9%	57%
0212	Other Beef Cattle	42	0.27	45%	4%	51%
0241	Dairy	180	0.84	58%	-	42%
0252	Eggs	255	2.27	58%	2%	40%
0272	Horses	11	0.07	62%	-	38%
0291	General Livestock Farms	11	0.02	46%	-	54%
02	Ag Production-Livestock	493	\$3.46	57%	2%	42%

TABLE 3C - MIXED AGRICULTURAL EMPLOYEES AND EARNINGS BY INDUSTRY
Ventura County - Calendar Year 1987
(continued)

Standard Industrial Classification (SIC)	Industry Title	Mixed (1) Employees in This SIC & County	Earnings in This SIC & County (\$ Millions)	Earnings in This SIC as a Percent of Total Earnings (2)	Farm (3) Earnings Outside This SIC as a Percent of Total Earnings (2)	Nonfarm (3) and Multi-establishment Earnings as a Percent of Total Earnings (2)
0711	Soil Preparation Services	11	\$0.21	79%	-	21%
0721	Crop Planting & Protection	127	0.58	42%	1%	56%
0722	Crop Harvesting by Machine	414	0.82	17%	18%	64%
0723	Crop Preparation for Market	244	2.07	55%	8%	37%
072	Total Crop Services	786	3.47	35%	12%	53%
0741	Livestock Veterinary Services	11	0.04	31%	-	19%
0761	Labor Contractors & Crew Leaders	3,737	6.74	21%	11%	68%
0762	Farm Management Services	584	2.07	39%	17%	44%
076	Total FLC & Mgt Services	4,321	8.81	23%	12%	65%
0781	Landscape Planning	21	0.10	20%	3%	72%
0782	Lawn & Garden Services	467	0.92	32%	46%	22%
078	Total Landscape & Hort Sers	488	1.02	30%	41%	29%
07	Total Agricultural Services	5,616	13.55	25%	14%	60%
01,071-2,076	Seasonal Ag Services	11,454	\$36.25	31%	10%	59%

TABLE 9C - MIXED AGRICULTURAL EMPLOYEES AND EARNINGS BY INDUSTRY
Ventura County - Calendar Year 1987

State of California
 Employment Development Department

(continued)

Standard Industrial Classification (SIC)	Industry Title	Mixed (1) Employees in This SIC & County	Earnings in This SIC & County (\$ Millions)	Earnings in This SIC as a Percent of Total Earnings (2)	Farm (3) Earnings Outside This SIC as a Percent of Total Earnings (2)	Nonfarm (3) and Multi-establishment Earnings as a Percent of Total Earnings (2)
01-02-07	California Agriculture	12,452	\$40.77	32%		
08-09	Forestry & Fishing	32	0.06	24%	16%	60%
10-14	Mining	64	0.41	66%	16%	16%
15-17	Construction	998	4.02	40%	24%	36%
20-29	Manufacturing 1	722	1.82	27%	38%	35%
30-39	Manufacturing 2	520	3.01	48%	22%	31%
40-49	Transportation	202	0.98	44%	38%	18%
50-59	Trade	1,656	5.02	37%	38%	25%
60-67	Fire	159	1.10	51%	29%	20%
70-79	Services 1	1,051	3.59	38%	26%	36%
80-89	Services 2	478	4.60	84%	20%	16%
90-99	Public Administration	53	0.50	76%	11%	13%
	Non-Ag & All Other SICs	5,934	25.12	42%	29%	29%
	Total	18,366	\$65.89			

Source: This table is based on a 9.42 percent sample of the 1,161,923 employees reported at least once by an agricultural employer to California UI authorities in 1987.

(1) Mixed farm and nonfarm employees were reported by at least one farm and one nonfarm reporting unit. Jobs from all SICs & FIPs are used to classify a worker.

(2) Percent totals may not equal 100% because of rounding.

(3) These farm and nonfarm jobs could have been in this or in another county or region; counts only work done outside of this SIC.

Farm means Standard Industrial Classification (SIC) 01, 02, and 071, 072, 0741, 0751, and 076.; Nonfarm includes SIC 0742, 0752, 078, 08-99, and multi-establishment reporting units which have no SIC.

APPENDICES

Appendix A

Glossary:

Agricultural Employees - All persons who had at least one job reported by an agricultural employer (with SIC 01, 02, or 07) to Employment Development Department for unemployment insurance purposes. These may include office workers, supervisors, truck drivers, and mechanics, as well as field and livestock workers.

Agricultural Operations - A reporting unit whose SIC code was 01 (Crops), 02 (Livestock), or 07 (Agricultural Services).

Employer - The legal entity which pays the Unemployment Insurance tax to Employment Development Department. In some cases the employer equals one establishment or reporting unit, while in other cases the employer will include several establishments or reporting units.

Establishment - A business unit, such as a store, factory, etc., which produces goods or provides services. It is usually at a single physical location and engaged predominantly in one type of business activity for which a SIC code is assigned on the basis of its primary activity.

Farm Jobs - Jobs classified in SIC codes 01 (Crops), 02 (Livestock), 071 (Soil Preparation Services), 072 (Total Crop Services), 0741 (Livestock Veterinary Services), 0751 (Other Livestock Services), and 076 (Total Farm Labor Contractors and Management Services).

Maximum Earnings - Workers are counted on Table 2 in the industry where they earned their greatest wages. Any additional wages earned in other industries are not counted on this table.

Migrant Workers - A seasonal worker who worked for at least two farm employers in at least two counties, worked 5 to 30 weeks, and earned \$1,000 to \$7,499.

Mixed Workers - Employees who were reported by at least one farm and one nonfarm employer.

Multi-establishments - Large employers having establishments in more than one county or in more than one industrial classification with at least fifty employees in their largest establishment and the sum of fifty or more employees in all other establishments.

Nonfarm Jobs - Jobs classified in SIC codes 0742 (Pet Veterinary Services), 0752 (Other Pet Services), 078 (Total Landscape and Horticultural Services); SIC codes 08-99 (e.g. SIC 15-17 Construction); and multi-establishment reporting units, which have no SIC codes in 1987. In 1988, multi-establishments were classified by their predominant SIC activities and reported under those industries.

Reporting Unit - A business establishment, usually at a single physical location and engaged predominantly in one type of business activity. In certain cases, two or more establishments are combined to make up one reporting unit. This occurs when establishments owned by the same employer are engaged in the same business activity in the same county.

Seasonal Workers - Employees who worked 5 to 30 weeks for one or more farm employers, and earned \$1,000 to \$7,500.

SIC - Standard Industrial Classification is a system of classifying all employers by type of business and industry. Tables in this report show data for all employees who worked in at least one agricultural classification under the SIC coding system. Agricultural SICs are comprised of Agricultural Production - Crops (SIC code 01), Agricultural Production - Livestock and Animal Specialities (SIC code 02), and Agricultural Services (SIC code 07). These categories at the two-digit SIC level are called Major Groups. Under these Major Groups are Industry Groups at the three-digit level, and Industries at the four-digit level. For example, within the Crops Major Group is the Industry Group of Fruits and Tree Nuts, SIC 017, and within this Industry Group are Industries such as Grapes, SIC 0172, and Deciduous Tree Fruits, SIC 0175.

Appendix B

Column Definitions for the Data Tables:

Table 1 - Agricultural Employees and Earnings by Industry:

SIC: The Standard Industrial Classification is a system of classifying all employers by type of business and industry. (See Glossary for additional information.)

Industry Title: The industry name assigned to a given SIC code (e.g. Dairy for SIC 0241).

Employees in This SIC: The total number of employees reported at least once by employers with the given SIC.

Earnings in This SIC (\$ Millions): Earnings of employees who worked in establishments with this SIC.

Total Earnings of Employees With at Least One Job in This SIC (\$ Millions): The total agricultural and non-agricultural earnings of all employees who had at least one job in the given SIC.

Earnings in This SIC as a Percent of Total Earnings: The percentage of earnings in this SIC as a percentage of total agricultural and non-agricultural earnings (for those employees who had at least one job in this SIC).

Employees Who Only Worked in This SIC: The percentage of workers reported in a given SIC who worked only in this SIC and who were not reported to have held any other jobs.

Employees Who Also Had Farm Jobs Outside This SIC: The percentage of employees who worked in this SIC and who also held at least one other farm job in a different SIC.

Employees Who Also Had Nonfarm Jobs Outside This SIC: The percentage of employees who worked in this SIC and who also held at least one other nonfarm job in a different SIC.

Table 2 - Agricultural Employees Assigned to The Industry of Their Maximum Earnings:

SIC: The Standard Industrial Classification is a system of classifying all employers by type of business and industry. (See Glossary for additional information.)

Industry Title: The industry name assigned to a given SIC code (e.g. Cotton for SIC 0131).

Employees With Maximum Earnings in This SIC: The number of employees whose maximum earnings (greatest amount of earnings in any one industry) were reported within a given SIC.

Earnings in This SIC (\$ Millions): Earnings of employees who worked in establishments with this SIC.

Percent of Total Employees and Earnings in This SIC: The number of workers with maximum earnings in a given SIC, expressed as a percentage of the total number of workers reported in that SIC. Earnings are expressed as a percentage of the total earnings reported in that SIC. There are three category rankings for each:

- 1) Income less than \$1000
- 2) Income of \$1000 - \$7499
- 3) Income of \$7500 and above

Table 3 - Agricultural Employees and Earnings by Industry:

Columns 1-5 of Table 3 uses the same information as Table 1.

Column 6, Farm Earnings Outside This SIC as a Percent of Total Earnings: Farm earnings outside the listed SIC, expressed as a percentage of total farm and nonfarm earnings reported for this SIC.

Column 7, Nonfarm and Multi-establishment Earnings as a Percent of Total Earnings: Nonfarm and multi-establishment earnings outside the listed SIC, expressed as a percentage of total earnings reported for this SIC.

Appendix C

Data Edits

A 10 percent sample was drawn from all agricultural workers' Social Security Numbers in the calendar year 1987. The data were edited, and nine invalid data sets were produced in addition to the one valid data set. The invalid data sets contained all workers data that:

- (1) were reported by 50 or more employers as an employee during the year,
- (2) had at least one job with non-numeric data in the record (all data should have been numeric),
- (3) had at least one job with at least one quarterly wage report which was greater than the maximum quarter wage or less than zero. The maximum quarter wage was an input parameter quantifying a ceiling amount of earnings that an agricultural worker could make in one quarter if working full-time. Quarterly wage reports are produced for the periods January through March, April through June, July through September, and October through December, of any given year.
- (4) had at least one job with quarterly weeks-of-earnings which were greater than the maximum or less than zero (the maximum value was an input parameter),
- (5) had at least one job with a quarter wage equal to zero and the weeks-of-earnings for that quarter was greater than zero,
- (6) had at least one job with an invalid county code,
- (7) had at least one job with an invalid SIC code,
- (8) had at least one job that has a non-zero combined wage (had wages in another state),
- (9) were reported by the same employer three or more times for the same year.

APPENDIX III

VENTURA COUNTY FARMS, 1990

CUSTOM REPORT FOR CRLA-OXNARD